

**INSTRUCTION SHEET
FOR
MODEL JLDKSB
JETSTREAM™ DOME RETROFIT KIT**

SAFETY MESSAGE TO INSTALLERS

People's lives depend on your safe installation of our products. It is important to read, understand, and follow all instructions shipped with the products. In addition, listed below are some other important safety instructions and precautions you should follow:

- To properly install this kit: you must have a good understanding of automotive electrical procedures and systems, along with proficiency in the installation and use of safety warning equipment.
- You should frequently inspect the light to ensure that it is operating properly.

A. GENERAL.

This instruction sheet covers the modification of a standard JetSonic® light bar to an all-light Jet-Stream system. It involves removing the Jetsonic light bar's speaker housing and installing a center dome and bulkheads (supplied). Before attempting to install the kit, ensure that the parts shown in the Kit Contents List (below) have been included.

B. KIT CONTENTS LIST.

Qty.	Description	Part No.
4	Screw, Mach. Hex Hd., 1/4-20	7000A311-06
1	Center Mounting Plate	8552C042A-01
1	Center Dome	8552314A
2	Bulkhead and Gasket Assy.	8552348A

C. INSTALLATION.

To install the kit, proceed as follows:

1. Remove the two screws located at the identification plate of each dome assembly. Save screws. Slide both dome assemblies out of the extrusion.
2. Remove the four (each) 1/4-20 hex head screws, flat washers and split lockwashers which secure the speaker housing (see figure 1). Save the

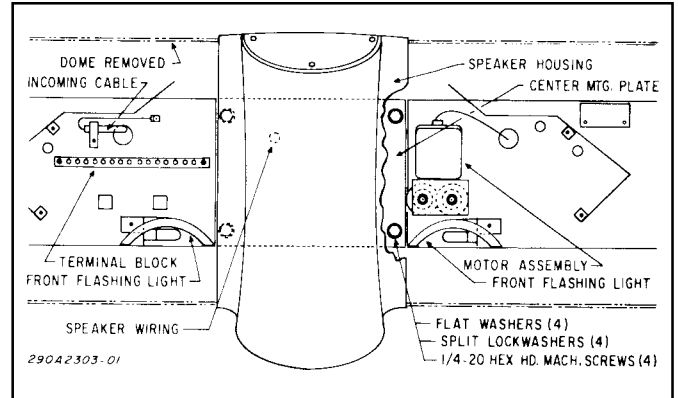


Figure 1.

four flat washers and split lockwashers. Remove the speaker housing and center mounting plate from the light bar.

NOTE

Some option kits may not require a center mounting plate. Before performing step 3, refer to the instruction sheet included with the option kit to determine if the center mounting plate is required.

3. Place the new center mounting plate in position and secure with four 1/4-20 hex head screws

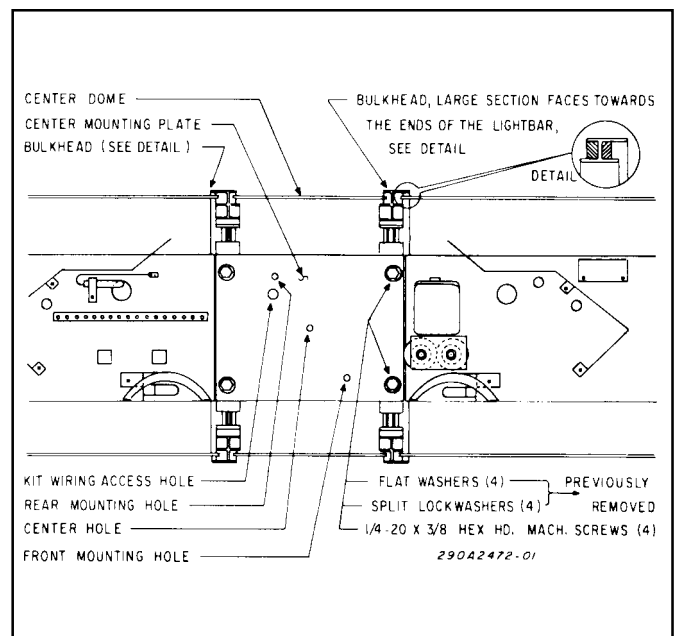


Figure 2.

(supplied), flat washers and split lockwashers (removed in step 2). (See figure 2.)

4. Slide the new center dome onto the extrusion and position it approximately in the center of the extrusion.

NOTE

The bulkheads should be installed with the larger section facing the light bar's end as shown in figure 2.

5. See figure 2. Slide a bulkhead onto the extrusion from the end. Repeat on the other side.

CAUTION

To prevent damage to the domes or the light bar, ensure that the domes are properly seated against the gaskets in the bulkheads.

6. Reinstall both dome assemblies, removed in step 1 (see figure 3). Reinstall each dome assembly identification plate with the previously removed screws.

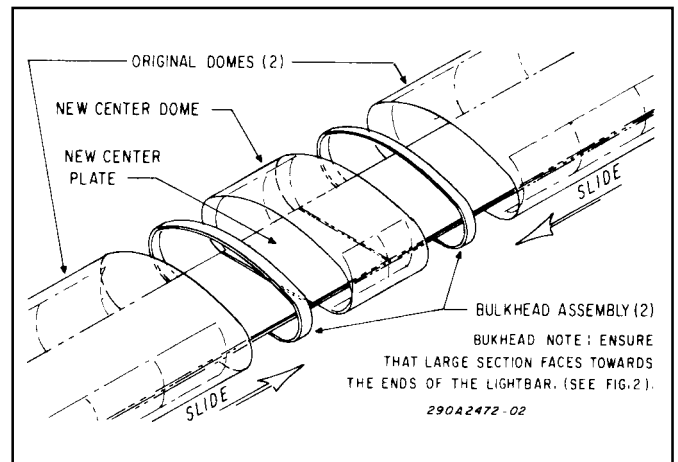


Figure 3.