

## FIREHAWK™ LIGHTBAR



FHL4800 Series

- **True 360 degree primary warning.**
- **Modular design for easy maintenance and field upgrades.**
- **Improved optics – more options available!**
- **Various sizes for every application.**
- **Custom color lower pods.**

Federal Signal's FireHawk™ lightbar offers the most effective, affordable warning available in a lightbar. By utilizing the "two-tier" design that made our standard StreetHawk® the largest selling lightbar in the world, FireHawk provides true 360 degree, unobstructed primary warning. Secondary lighting functions are placed in the "pods" beneath the primary lights.

This modular design allows you to custom design your lightbar, provides more room for lighting options, and makes maintenance a snap. The lightbar's brilliant 80,000 candela rotators are highly effective, and can be combined with additional primary and secondary warning options. The FireHawk lightbar is designed to meet the specific needs of today's fire and EMS response professionals.

Choose from FireHawk models in various lengths with preselected options, or custom design your own lightbar by specifying factory installed options to a base bar.

### Primary Options

**Rotating Light:** Available in 95 Flashes Per Minute or 175 FPM versions. By specifying a diagonal mirror next to a rotator, the flash rate of the rotator is doubled, with no increase in power consumption.

**Meteor™ Light:** Only Federal Signal offers this vertically and horizontally sweeping "M" pattern light that virtually eliminates blind spots.

**Oscillating Lights:** Federal Signal's new "DynaRay™" Intersection Clearing Lights (SICL) concentrate warning light and direct it to critical areas in a 110° sweeping motion. DynaRay oscillating lights are mounted in pairs—in the center section or at either end of the lightbar. Standard oscillating lights are available individually for the center section.

### Secondary Options

**Flashing Lights:** Alternating flashing lights are ideal secondary warning and additional primary warning. Reflectors are designed to spread light "off-axis" for superior

directional warning. Alternating flashing lights are controlled by Federal Signal's reliable "FA3" electronically timed flasher.

**Scene/Work/Side Lights:** These are spotlights designed to provide full area illumination to the front (scene), rear (worklight) or side (side light) of your vehicle.

**Also available:** Strobe options that allow you to create strobe/halogen combinations. Brake/turn/tail lights and Department Of Transportation marker lights that work in conjunction with your vehicle's lights are also available. As an additional option, Federal has a California steady burn light that meets California Automotive Code (CAC) "Class B" specifications.

Field upgrade kits for most options are available for future field additions.

All internal components of the FireHawk lightbar are readily accessible for bulb or flasher replacement, field upgrades, and maintenance.

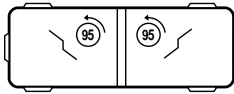
You select the colors of the primary domes (driver/center/passenger) and all secondary option lenses. Clear domes allow you to "color customize" your lightbar even more by placing primary lens covers (SPL) over individual rotating and oscillating lights.

# DIAGRAMS OF PRESELECTED OPTION MODELS

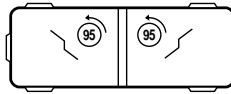
## AMBULANCE LIGHTBARS

## FIRE LIGHTBARS

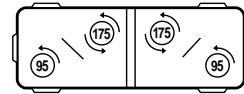
front  
↑



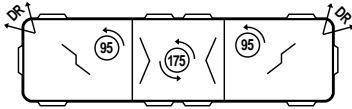
FHL3550W



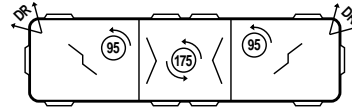
FHL3550R



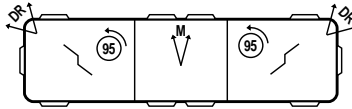
FHL3551R



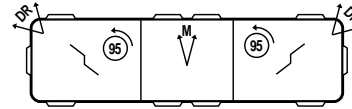
FHL4850W



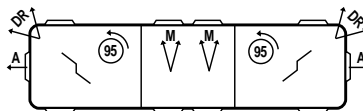
FHL4850R



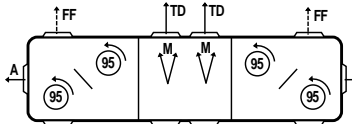
FHL4851W



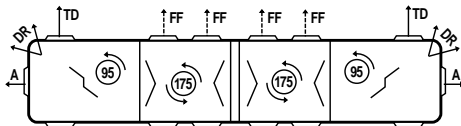
FHL4851R



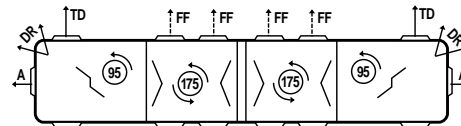
FHL4852W



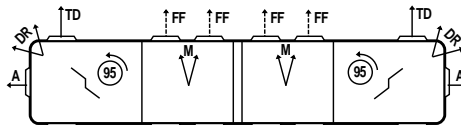
FHL4852R



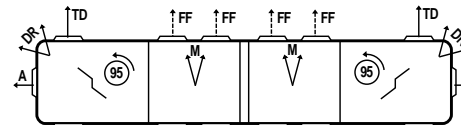
FHL6550W



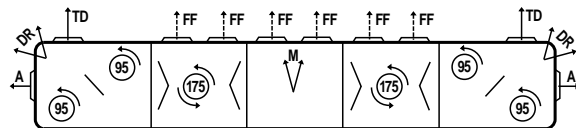
FHL6550R



FHL6551W



FHL6551R



FHL8050R

### LEGEND

95 FPM Rotator ("ROT")

175 FPM Rotator ("FAST")

Scene Lights ("TD")

Alley Lights ("A")

Meteor Light ("TCL")

Dynaray Intersection Light ("DR")

Front Flashing Light ("FF")

Rear Flashing Light ("RF")

Diagonal Mirror ("MIR")

V-Mirror ("VMIR")

Cascade Mirror ("CMIR")

# HOW TO ORDER

1. Choose a model with preselected options (1A) then go to 5, **OR** choose a base model and specify all options (1B) to design your own lightbar. An "R" after the model # means red base pods, a "W" means white. See page 2 for Preselected Option models.

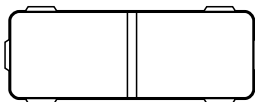
MODEL NO.	DESCRIPTION
<b>A. PRESELECTED OPTIONS Models:</b>	
<b>FHL3550W</b>	35", (2) standard rotators, (2) cascade mirrors
<b>FHL4850W</b>	48", (2) standard and (1) fast rotators, (2) DynaRay lights, (2) cascade mirrors, (2) V mirrors
<b>FHL4851W</b>	48", (2) standard rotators, (2) DynaRay lights, (1) Meteor, (2) cascade mirrors
<b>FHL4852W</b>	48", (2) standard rotators, (2) DynaRay lights, (2) Meteor, (2) cascade mirrors, SA
<b>FHL6550W</b>	65", (2) stand. and (2) fast rotators, (2) DynaRay lights, (2) cascade mirrors, (4) V mirrors, (2) scene lights, FF, SA
<b>FHL6551W</b>	65", (2) standard rotators, (2) DynaRay lights, (2) Meteor, (2) cascade mirrors, (2)scene lights, FF, SA
<b>FHL3550R</b>	35", (2) standard rotators, (2) cascade mirrors
<b>FHL3551R</b>	35", (2) standard and (2) fast rotators, (2) diagonal mirrors
<b>FHL4850R</b>	48", (2) standard and (1) fast rotators, (2) DynaRay lights, (2) cascade mirrors, (2) V mirrors
<b>FHL4851R</b>	48", (2) standard rotators, (2) DynaRay lights, (1) Meteor, (2) cascade mirrors
<b>FHL4852R</b>	48", (4) standard rotators, (2) Meteor, (2) diagonal mirrors, (2) scene lights, FF, SA
<b>FHL6550R</b>	65", (2) stand. and (2) fast rotators, (2) DynaRay lights, (2) cascade mirrors, (4) V mirrors, (2) scene lights, FF, SA
<b>FHL6551R</b>	65", (2) standard rotators, (2) DynaRay lights, (2) Meteor, (2) cascade mirrors, (2) scene lights, FF, SA
<b>FHL8050R</b>	80", (4) standard and (2) fast rotators, (2) DynaRay lights, (1) Meteor, (2) diagonal mirrors, (4) V mirrors, (2) scene lights, FF, SA

FF = pair front flashing lights      SA = pair side lights  
RF = pair rear flashing lights      CAL = California steady burn

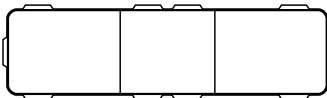
**B. SPECIFY ALL OPTIONS Base Models**

<b>FHL3500</b>	35" FireHawk, Specify All Options
<b>FHL4800</b>	48" FireHawk, Specify All Options
<b>FHL6500</b>	65" FireHawk, Specify All Options
<b>FHL8000</b>	80" FireHawk, Specify All Options

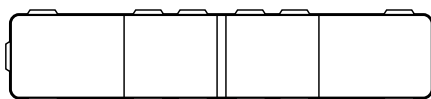
Specify **W** for white base or **R** for red base after model #.



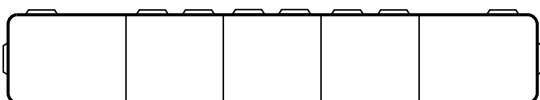
FHL3500



FHL4800



FHL6500



FHL8000

2. Select factory installed options for primary dome sections and specify location.

MODEL	DESCRIPTION
Max of 2 per side (4 per bar):	
SROT-A	(1) 95 FPM offset rotator
SFAST-A	(1) 175 FPM offset rotator
STCL-A	(1) "Meteor" light
SOSC-A	(1) Oscillating light
One set per bar:	
SICL-A	(2) DynaRay intersection clearing lights
SICLF-A	(2) DynaRay intersection clearing lights—fast
One per side (2 per bar):	
SVMIR-A	"V" mirror, pair (mounts across from rotator)
SMIR-A	diagonal mirror, pair (mounts between or next to rotators)
SCMIR-A	cascade mirror, pair (mounts next to rotator)

3. Select center section(s) option packages. (One/center section)

MODEL	DESCRIPTION
SCROT2-A	(1) 95 FPM centered rotators, (2) "V" mirrors
SCFAST2-A	(1) 175 FPM centered rotators, (2) "V" mirrors
SCTCL-A	(2) "Meteor" lights
STCL-A	(1) "Meteor" light
SOSC-A	(1) oscillating light
SCICL-A	(2) DynaRay intersection clearing lights
SCICLF-A	(2) DynaRay intersection clearing lights—fast

4. Select factory installed options for secondary pod sections and specify location.

MODEL	DESCRIPTION	MODEL	DESCRIPTION
SFL-A	(2) Alt. flashing lights	SDOT	D.O.T. marker lights
SFL4-A	(4) Alt. flashing lights	STD-A	(1) Scene light
SA-A	(2) Side lights	SWL-A	(1) Worklight
SDA-A	(2) Directional strobes	SBTT-A	brake/turn/tail lights
SCAL-A	(1) Cal. steady burn light		

5. Specify dome colors—Red, Clear, Amber, Blue

–2 Primary Domes installed (driver & passenger sides)

–Primary Center Section installed (1/FHL4800, 2/FHL6500)

–Secondary Lenses—included in package (1/option pod)

Total required: 6/FHL3500 Series  
10/FHL4800 Series  
14/FHL6500 Series

(White or red covers supplied for unspecified pods)

With clear primary domes, individual rotators can be colored with "SPL" lens covers. Order separately, one per rotator.

6. Each FireHawk comes complete with mounting hardware to mount to your existing custom brackets, or, order one of the following Fire/Ambulance mounting kits.

MODEL	DESCRIPTION
FHAMK	White high permanent mount kit
FHFMK	Red high permanent mount kit
FHFMKL	Red high permanent mount kit, qty. 3

7A. For a chief's vehicle, specify mounting feet and hook kit.

MODEL	DESCRIPTION
UNHK	Hook-on bracket
UNPK	Permanent mount
SHLSK	Level surface mount

7B. Order hook kit options\*.

MODEL	DESCRIPTION
SHK-FD	Ford gutterless
SHK-GM	GM gutterless
SHK-CV	Crown Victoria gutterless
SHK-CV92	'92 Crown Victoria gutterless
SHK-FE	Ford Explorer gutterless
HK-LUM	Lumina gutterless

\*Consult SL-8 Price List for additional gutterless mount information.

TECHNICAL SPECIFICATIONS						
Option	Description	Volt	Lamp Type	Candelas	Current Draw	Flash Rate Per Minute
SROT	Rotating Light	12.8	Halogen, 55W	80,000	4.3 amps	95
SCROT2	Rotating Light, 2 Mirrors	12.8	Halogen, 55W	80,000	4.3 amps	285
SFAST	Rotating Light	12.8	Halogen, 55W	80,000	4.3 amps	175
SCFAST2	Rotating Light, 2 Mirrors	12.8	Halogen, 55W	80,000	4.3 amps	525
STCL	"Meteor" Light	12.8	Halogen, 50W	40,000	3.9 amps	—
SCTCL	2 "Meteor" Lights	12.8	Halogen, 50W	40,000 ea	3.9 amps ea.	—
SOSC	Oscillating Light	12.8	Halogen, 55W	80,000	4.3 amps	120
SICL, SCICL	2 Oscillating Lights	12.8	Halogen, 55W	80,000	4.3 amps	120 ea.
SICLF, SCICLF	2 Oscillating Lights, Fast	12.8	Halogen, 55W	80,000	4.3 amps	190 ea.
SFL	Alt. Flashing lights	12.8	Halogen, 35W	5,580	2.7 amps	90
SA	Side Lights	12.8	Halogen, 50W	9,280	3.9 amps	—
SBTT	Brake/Turn/Tail Lights	12.8	Incand., 28/8W	—	2.1/0.6 amps	—
SCAL	Steady Burn	12.8	Halogen, 50W	5,580	3.9 amps	—
STD, SWL	Scene, Work Lights	12.8	Halogen, 50W	9,280	3.9 amps	—

DIMENSIONS								
Model	Length		Width		Height		Ship Weight	
	inches	cm	inches	cm	inches	cm	pounds	kg
35" Models	36.2	91.9	12.8	32.4	7.6	19.3	33.0	15.0
48" Models	49.5	125.7	12.8	32.4	7.6	19.3	48.0	21.8
65" Models	65.0	165.1	12.8	32.4	7.6	19.3	63.0	28.6
80" Models	81.3	206.5	12.8	32.4	7.6	19.3	78.0	35.5

### APPROVALS

- All rotating lights meet Society of Automotive Engineers (SAE) J845 specification.
- All flashing lights meet SAE J595 specification.
- **SCAL** steady burn light meets CAC Class B specification.
- Brake/turn/tail lights meet SAE J186 specifications.

### FIELD UPGRADE KITS

<b>SATK</b>	(2) side/scene/work lights
<b>SBTK</b>	(2) brake/turn/tail lights
<b>SFEK</b>	(2) alternating flashing lights (requires flasher)
<b>FA3</b>	flasher for SFEK
<b>SFLK</b>	(2) steady burning California or flood lights
<b>SSK</b>	(2) directional strobe lights
<b>TCL2</b>	"Meteor" light
<b>SROTK</b>	95 FPM rotator
<b>SFASTK</b>	175 FPM rotator
<b>SOSCK</b>	(1) oscillating light
<b>SICLK</b>	(2) DynaRay intersection clearing lights

### REPLACEMENT PARTS

Replacement Bulbs:	
rotating, oscillating:	8440A265A
SCAL, side, scene, worklight:	8107A119A
flashing, bulbs:	8548A028A
brake/turn/tail bulb:	8107A095
Alternating Flasher:	FA3
Replacement Domes, passenger or driver's side—	
Clear:	8559D042C
Red:	8559D042C-01
Amber:	8559D042C-02
Blue:	8559D042C-03
Green:	8559D042C-04
CIE Blue:	8559D042C-05
Replacement Dome, Center Section(s)—	
Clear:	8559182A
Red:	8559182A-01
Amber:	8559182A-02
Blue:	8559182A-03
Green:	8559182A-04
CIE Blue:	8559182A-05
Replacement Secondary Pod Lens—	
Clear:	8559D043B
Red:	8559D043B-01
Amber:	8559D043B-02
Black:	8559D043B-03
Blue:	8559D043B-04
CIE Blue:	8559D043B-05
Solid Red:	8559D043B-06
Solid White:	8559D043B-07
Rotator Assembly (less bulb)—	
ROT:	8552C266A
ROT2:	8552C308A
FAST:	8552C266A-01
FAST2:	8552308A-01
Replacement Motors—	
95 FPM:	8559A055
175 FPM:	8559A055A-01
Oscillating and Meteor (TCL) Lights: 8559A055A	