

**INSTRUCTION SHEET  
 FOR  
 MODELS SHCLA-K, SHCLR-K, AND SHCLB-K  
 HALF-CENTER DOME KIT**

**SAFETY MESSAGE TO INSTALLERS**

People's lives depend on your safe installation of our products. It is important to read, understand and follow all instructions shipped with this product. In addition, listed below are some other important safety instructions and precautions you should follow:

- To properly install this kit: you must have a good understanding of automotive electrical procedures and systems, along with proficiency in the installation and use of safety warning equipment.
- File these instructions in a safe place and refer to them when maintaining and/or reinstalling the product.

Failure to follow all safety precaution and instructions may result in property damage, serious injury, or death to you or others.

**A. GENERAL.**

The Model SHCLA-K, SHCLR-K, or SHCLB-K half-center dome kits supply all the parts necessary for installing a half-center dome kit in the center section of a Federal All Light StreetHawk® lightbar.

After unpacking the kit, carefully check all envelopes, shipping labels and tags before removing or destroying them. Ensure that the parts listed in

the KIT CONTENTS LIST are contained in the packing carton.

**B. KIT CONTENTS LIST.**

Qty	Description	Part No.
2	Clip, Dome	8559275
2	Scr. #10 Hex. Hd. Thd. Frm.	7011A122-08
1	AR Dome, Half-center, Red	8559276-01
	Dome, Half-center, Blue	8559276-02
	Dome, Half-center, Amber	8559276-03

**C. DOME REMOVAL (see figure 1).**

1. Turn off power to the Light Assembly.
2. Remove the #8-32 x 7/8 hex head screws from the front and rear edges of the dome.
3. Carefully remove the domes. Ensure that the bulkhead gasket remains tucked in its groove.

**WARNING**

Added lighting options may cause excessive current draw. Before proceeding with installation, ensure that conductors are not overloaded. Using the current requirements shown in table 1, calculate the total current requirement with the currently installed options. The total current requirement must not exceed 50-amperes.

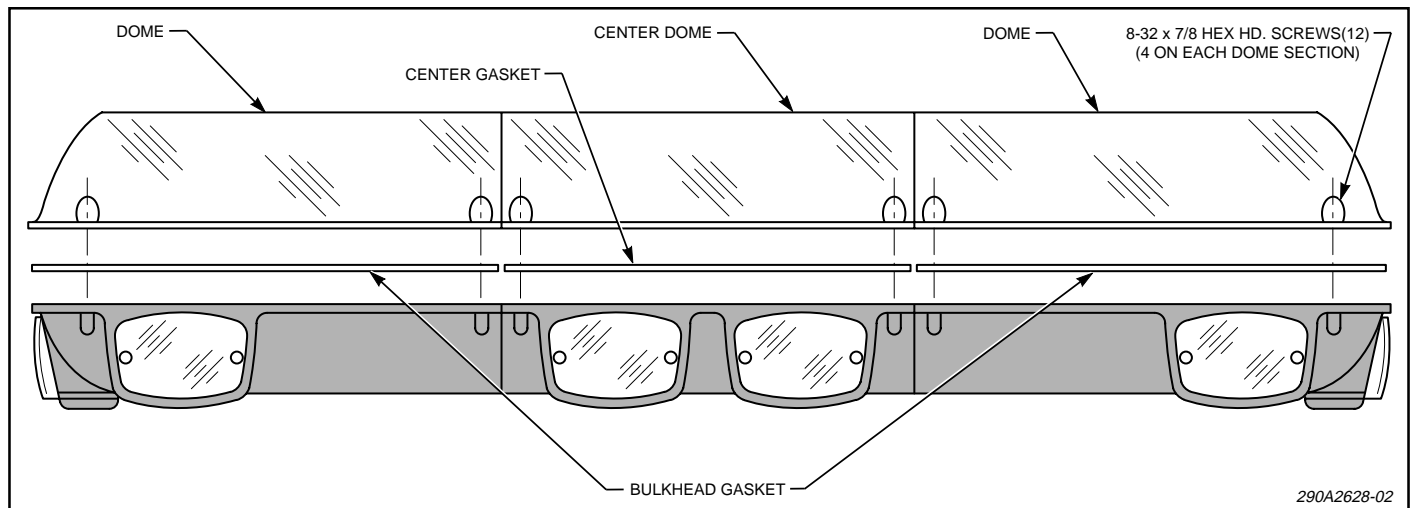


Figure 1.

<i>Option</i>	<i>Current Requirement</i>	<i>See Note</i>
Right Alley	4.0 amperes	
Left Alley	4.0 amperes	
Flashing(2)	2.74 amperes	
Take Down	4.0 amperes	
Work Light	4.0 amperes	
Dir. Strobe	10.0 amperes	A
Rotator	4.3 amperes	B
TCL	4.0 amperes	
DynaRay	4.3 amperes	
Tail Light	0.59 amperes	
Left Turn	2.10 amperes	
Right Turn	2.10 amperes	
Cal	4.3 amperes	
Ground	—	C

Notes:

A. One J-30 power supply with two directional strobes requires 5.0 amperes. Two J-30 power supply with two directional strobes requires 10.0 amperes.

B. The incoming cable's red 12AWG conductor is rated at 35 amperes. The internal wiring harness uses 18 AWG conductors rated at 13 amperes each. DO NOT overload the conductors.

C. The sum of all option's current requirements shall not exceed 50 amperes.

Table 1. Option Current Requirements.

**D. INSTALLATION.**

**WARNING**

To avoid electrical shock and/or wiring damage, ensure that ALL power to the lightbar is disconnected BEFORE proceeding with installation.

1. See figure 2. Place the half-center dome over the rotator in the center section. Ensure that the rotator's reflector is free to rotate inside the half-center dome. Also, ensure that wires are not pinched between the half-center dome and the lightbar center section base.

**WARNING**

Service life of lamp will be shortened if glass portion is touched. If glass has been handled, clean carefully with a grease solvent.

2. Place the dome clips in position over hole locations "D" or "E", as required. Ensure that the clips will hold the split center dome's edge. Secure the clips in position using the #10 hex head thread-forming screws.

**E. WIRING.**

**WARNING**

Added lighting options may cause excessive current draw. Ensure that conductors are not overloaded. Using the current requirements shown in table 1, calculate the total current requirement with the currently installed options. The total current requirement must not exceed 50-amperes.

1. If adding any lighting option, refer to the instructions supplied with the option and see the applicable wiring diagram in figure 3.

**WARNING**

To prevent personal injury and/or damage to vehicle components, in the event of a short-circuit in the power cable, install a fuse in each incoming cable conductor.

**CAUTION**

Interference with a rotating reflector can damage the reflector or wires. Ensure that wires are dressed to prevent any interference.

2. Dress the wires with a wire tie.

**NOTE**

Any of the lightbar functions can be activated by applying 12VDC to the appropriate control line. The heavy black lead (-) must be connected to vehicle ground to perform a function check.

3. Before replacing the domes, test each function by applying 12VDC to the appropriate control line.

4. Replace the dome assemblies and secure with the previously removed screws. Torque dome screws to 14 - 18 in-lbs.

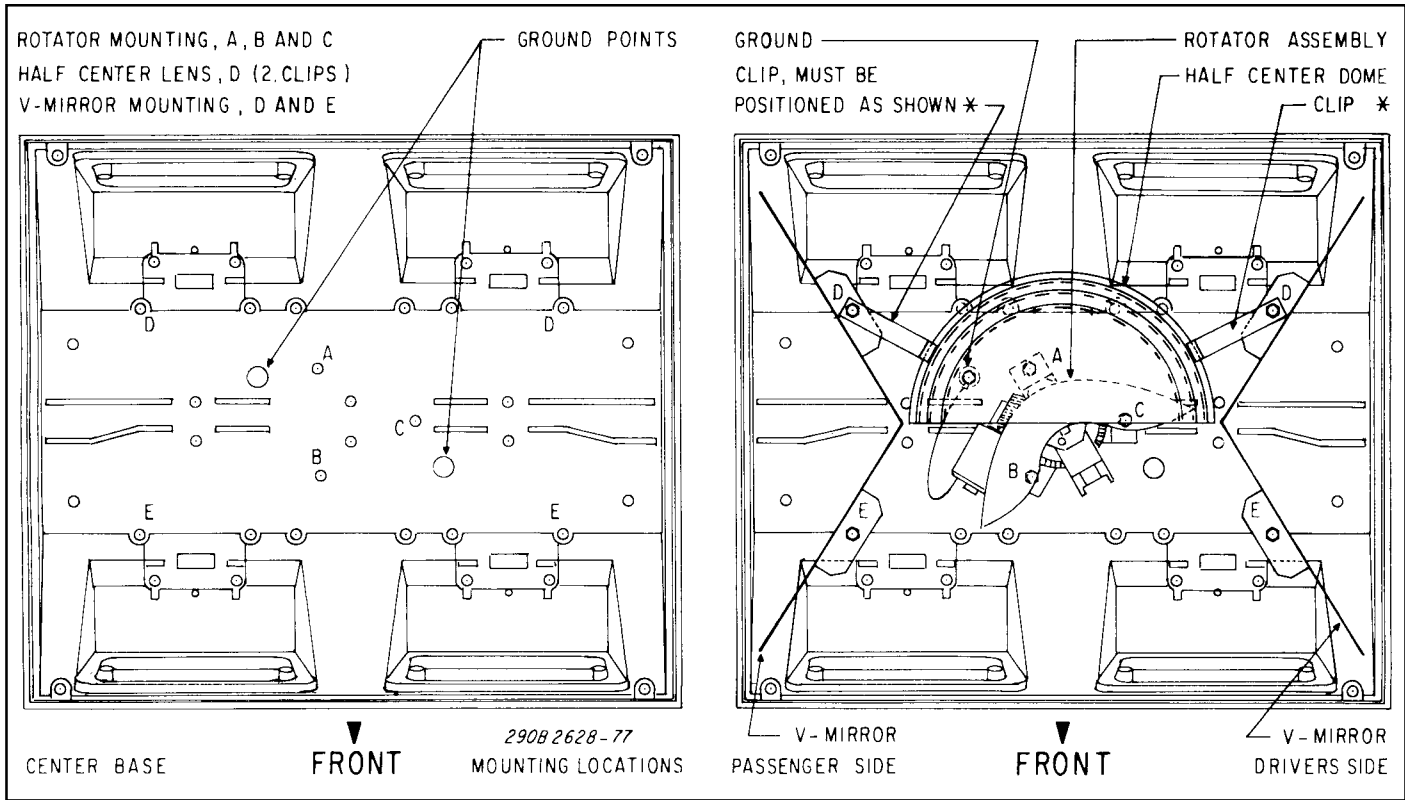


Figure 2.

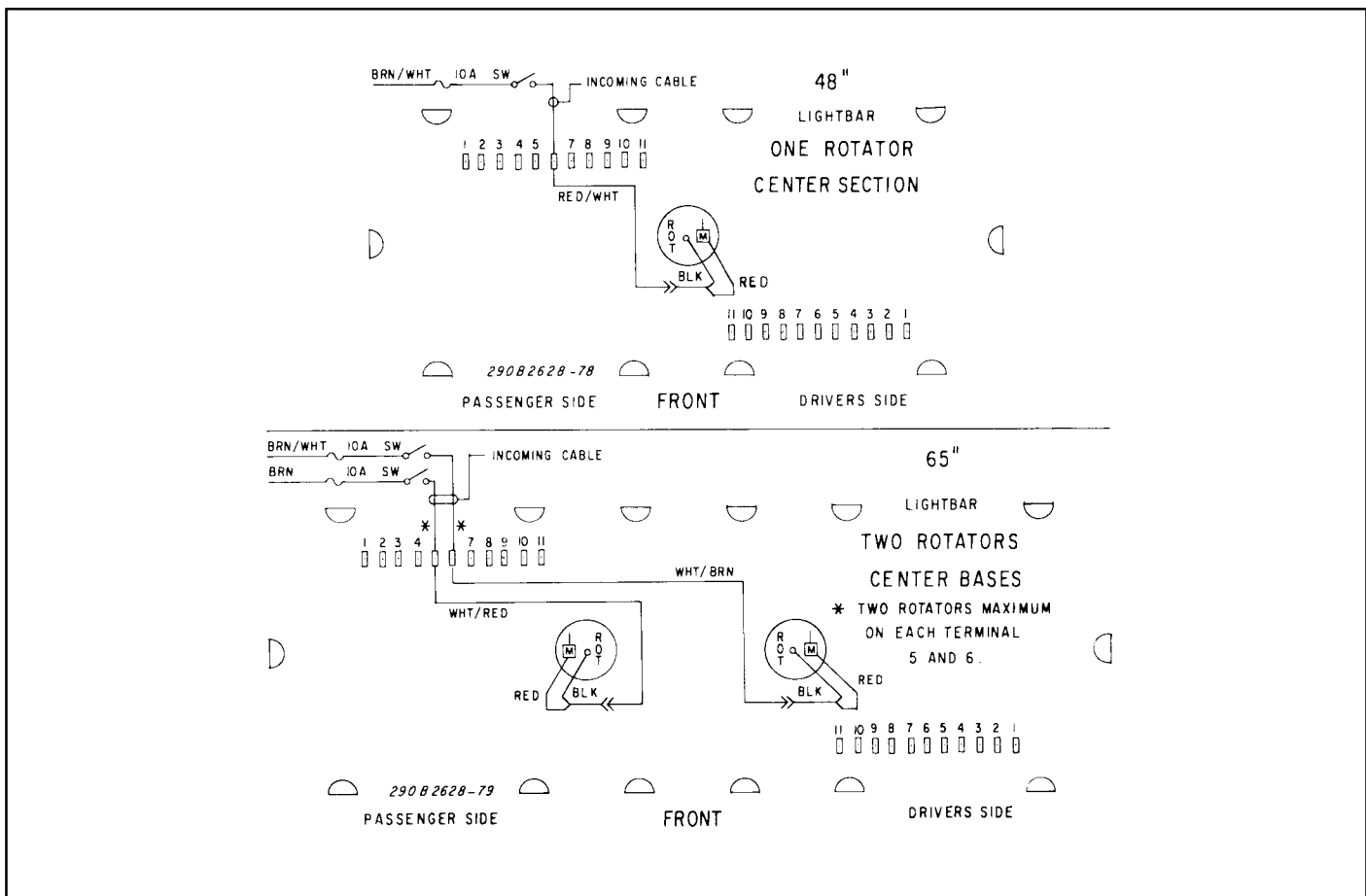


Figure 3.

## F. MAINTENANCE.

### WARNING

Service life of lamp will be shortened if glass portion is touched. If glass has been handled, clean carefully with a grease solvent.

Rotating lights should be lubricated at least twice a year. Use medium consistency Dow Corning DC33 or equivalent type grease. Proceed as follows (see figure 4):

1. Remove lamp and clip from rotating light.
2. Lift-off reflector and worm gear. Lubricate with grease as shown in figure 4.
3. Replace parts by performing the above procedure in reverse order.

### NOTE

When reassembling, ensure that the lamp is secured to the connector and that the clip is properly seated in the groove on the lamp socket.

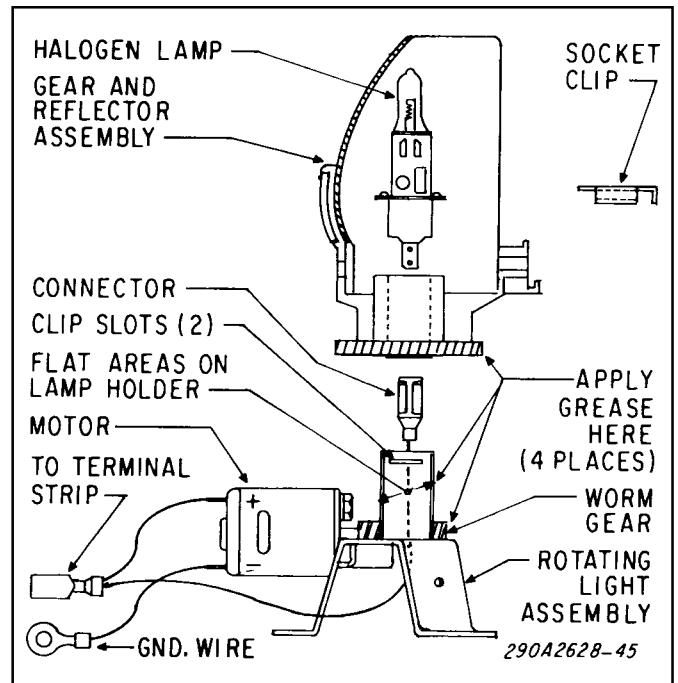


Figure 4.